



# PLAN IT NATIVE

LANDSCAPES CONFERENCE



SEPTEMBER 22-24, 2021  
ONLINE CONFERENCE



/PLANITNATIVE



@PLANITNATIVE



@DEEPROOTSKC





# WELCOME TO PLAN IT NATIVE!

## A MESSAGE FROM DEEP ROOTS:

Thank you for your passion and interest in native plants! At Deep Roots, we like to say What You Plant Matters. We hope this conference will inspire you and expand your knowledge to be able to plant and maintain more native plant landscapes.

Welcome to Plan It Native 2021, Deep Roots' third annual conference! We are excited to have you join us from both near and far. In 2020, Plan It Native hosted people from 40 states and four countries. Interest is growing by leaps and bounds in native plants – thank you for being a part of a regenerative transformation in the way we landscape.

Plan It Native offers learning opportunities for native plant landscapers and land managers. We're also offering sessions to help improve our communications regarding native plants. From impactful, interpretive signs to the nuanced conversation of true natives versus cultivars, strong communications can help us encourage more people to plant more native plant gardens and landscapes!

Planning is already underway for Plan It Native 2022. Are you passionate about native plants? Do you have content ideas for next year's program? We welcome your feedback, and if you're interested, please consider joining a conference committee. Plan It Native depends on knowledgeable people like you to help us craft a great learning experience. Join us! Email [hello@deeprootskc.org](mailto:hello@deeprootskc.org) to learn more.

Thank you to the members of the 2021 Plan It Native conference committees and the multitude of volunteers who brought this event together. Thank you to Plan It Native sponsors without whom we could not organize this impactful conference. Also, thank you to our speakers; we appreciate your willingness to share your knowledge and expertise.

Finally, thank YOU for joining us and helping spread the word of native plants!

### Plan It Native 2021 Planning Committee

Noel Bennion  
Stacey Davis  
Margo Farnsworth  
Kathy Gates  
Linda Lehrbaum

Larry O'Donnell  
Jeff Powelson  
Eric Tschanz  
Stephen Van Rhein

### Deep Roots KC Staff

Stacia B. Stelk, Executive Director  
Jahaira Aguilar, Project Coordinator  
Sarah Beier, Conference Coordinator  
Tammy Thompson, Project Coordinator

# GETTING STARTED GUIDE

## BEFORE THE CONFERENCE

### All you need:



#### 1. Access Link

<https://app.socio.events/OTg3Nw>



#### 2. Chrome browser



#### 3. Download Zoom

[www.zoom.com](https://www.zoom.com)

### To get the most out of Plan It Native, you may wish to also:

#### ■ Download the Plan It Native mobile app



Use the mobile app as a companion to the conference for the best networking experience.



Scan the code with your mobile device's camera to download the app, or search for Plan It Native on the App Store or Google Play.



## NEED HELP?

Contact our dedicated conference Help Desk! Our Help Desk volunteers can assist you with login problems, Zoom setup, navigating the conference venue, and more. Help will be available 9:00 AM to 5:00 PM daily and during early and late conference events.

[helpdesk@deeprootskc.org](mailto:helpdesk@deeprootskc.org) | 816-301-7545, Option 5 | Available September 20-24

## HOW DO I...

### ...Log In and Set Up My Profile?


In the Chrome browser, click on the link from your **Conference Access Information email** or type <https://app.socio.events/OTg3Nw> into the address bar.

- Enter the email address you used to register.
- Select a password, and re-enter to verify.
- Enter your name and help us get to know you with a line or two.


## HOW DO I...

### ...Attend a Session?

Desktop or Laptop:

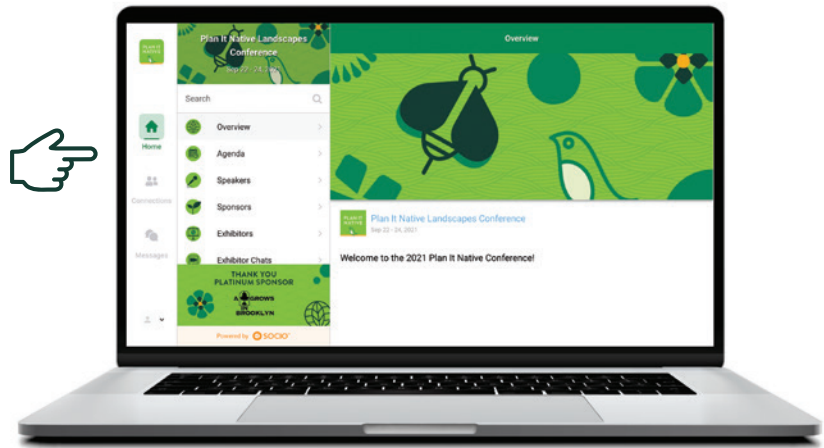
- Choose  **Agenda** in the left column. You will see the sessions listed in chronological order.
- Click **the session you would like to attend**
- Click **Join Live Stream**

Mobile Device:

- From the **Home** screen, choose the  **Agenda** icon.
- Tap the **session you wish to attend**.
- Click **Join Live Stream**



**PLAN IT  
NATIVE**  
LANDSCAPES CONFERENCE





## HOW DO I...

### ...Attend a Roundtable Discussion or Office Hours?

*First, ensure you have downloaded Zoom. Unlike the concurrent sessions, these interactive events will require a free Zoom account.*

Desktop or Laptop:

- From  **Agenda**, click on the event you would like to attend.
- Zoom will open the event in a separate browser tab. Click the **blue button** to join.
- If this is your first interactive event of the day, click **Test Speaker and Microphone**.
- **Leave** is in the bottom right corner.
- If you would like to join another interactive event, return to the  **Agenda** to choose another Zoom room.

Please come with your camera on! While you will not be onscreen during the sessions, these events are all about getting face time in small groups with each other and the presenters.

Mobile Device:

You will need to download the Zoom mobile app.

- From the **Home** screen, choose the  **Agenda** icon and **tap your chosen event**.







# WEDNESDAY, SEPTEMBER 22



**NANCY R. LEE,**  
President,  
Social Marketing Services, Inc.  
Keynote Speaker

Nancy Lee has more than 30 years of professional marketing experience, with special expertise in Social Marketing, the proven discipline for behavior change for social good.

She is president of Social Marketing Services, Inc., in Seattle, Washington, a strategic advisor for social marketing campaigns at C+C, a communications and PR firm in Seattle, and a teaching associate at the University of Washington, where she has taught social marketing in the MPA and has been a guest lecturer in public health programs. She also teaches an online Professional Certificate course for the International Social Marketing Association.

She has co-authored 13 books on Social Marketing, 10 with Philip Kotler, and has contributed numerous articles to professional journals including the *Stanford Social Innovation Review*, *Social Marketing Quarterly*, *Journal of Social Marketing*, and *The Public Manager*.

She is President of the Pacific Northwest Social Marketing Association (PNSMA) and serves on the Board of the International Social Marketing Association, as well as the Social Marketing Association of North America. (SMANA).

## AGENDA

<b>12:00pm—5:00pm</b>	<span style="color: #9ACD32;">●</span> Exhibitor Chats Open 12pm-5pm   Get acquainted with the virtual event venue
<b>1:00–2:00pm</b>	<span style="color: #9ACD32;">●</span> Opening and Keynote Address   Nancy R. Lee
<b>2:15–3:15pm</b>	<span style="color: #00B0F0;">●</span> Plant Provenance & Sourcing: Native Plants for Diverse Landscape Needs   Claudio Vazquez <span style="color: #800080;">●</span> Natives, Cultivars and “Nativars”   Carol Davit & Ronda Burnett <span style="color: #FF8C00;">●</span> Where do Those Native Plants Come From? Taking Inspiration from Nature’s Design   Mike Leahy
<b>3:30–4:30pm</b>	<span style="color: #00B0F0;">●</span> Growing a Horticulture Program: Stories from the Outdoor Classroom   Carrie Coyne <span style="color: #800080;">●</span> Communicating the Value of Native Plants, In Person and Online   Alonso Abugattas <span style="color: #FF8C00;">●</span> All Hands on Deck: Collaboration for Midwestern Monarch Conservation   Kiley Friedrich <span style="color: #00B0F0;">●</span> Roundtable: Meeting the Increased Demand for Native Plants   *Requires Zoom
<b>4:45–5:15pm</b>	<span style="color: #9ACD32;">●</span> Speaker Office Hours   Meet and chat with today’s presenters

# SESSIONS

## ● **Plant Provenance & Sourcing: Native Plants for Diverse Landscape Needs**

**Claudio Vazquez**

Co-founder,  
Izel Native Plants

Navigate the task of selecting and sourcing native plants in this one-of-a-kind session. Home gardeners, professional designers and restoration specialists all have their own requirements but share a common goal of wanting to contribute to a more sustainable and ecologically sound environment. This program will provide important terminology essential to clearly articulate needs. It will also review the basics of native plants and drill down to genotype, plant provenance and more. We will discuss what is meant by “local,” advantages and downsides to using cultivars, as well as the challenges of native plant propagation and commercial production, and how genetic diversity of the plants is affected.

## ● **Natives, Cultivars and “Nativars”** **Carol Davit**

Executive Director,  
Missouri Prairie Foundation

**Ronda Burnett**

Community Conservation Planner,  
Missouri Department of Conservation

Dive into this rich session on native plant cultivars and how they differ from native plants. Many plants in the mainstream horticulture trade are promoted and labeled as “native” when in many cases, these plants are not straight native species, but rather “nativars.” This program will walk through recently developed materials including a new science-based educational resource on nativars. Learn more about how native species occur in the wild, their reproduction, diversity of genes, and adaptability. Gain resources to inform and guide native plant landscaping journeys including an expanded Native Plant Database, a Native Landscape Care Calendar, and much more.

## ● **Where Do Those Native Plants Come From? Taking Inspiration from Nature’s Design**

**Mike Leahy**

Natural Community Ecologist,  
Missouri Department of Conservation

Learn more about native plants utilized in landscaping endeavors and their rich natural history in this information-packed session. Native plants come from distinct natural communities; inter-related assemblages of flora, fauna, soils, regional climate, geologic history, and natural processes such as flooding or fire. We will learn about a wide variety of natural community types from prairies to forests and their ecological stories. A knowledge of the original habitats of our native plants can deepen the inspiration and success of all those who work towards regenerative landscapes.

## ● **Growing a Horticulture Program: Stories from the Outdoor Classroom**

**Carrie Coyne**

Horticulture Program Facilitator,  
St. Louis Community College

Over the past five years, the Horticulture program at St. Louis Community College Meramec has been converting the students’ outdoor lab from a traditional ornamental garden to one that contains a large collection of native plants and plant communities. Industry trends toward native plant landscapes are reflected in the transition of form, function and management of the ten-acre garden, as well as the program’s applied horticulture curriculum. Get a glimpse of the Garden Classroom where students experience, first-hand, the unique benefits and challenges of native plant stewardship.

## ● **Communicating the Value of Native Plants, In-Person and Online**

**Alonso Abugattas**

Natural Resources Manager,  
Arlington County Parks

Connect and communicate the value of native plants with your audiences through this immersive session. While more and more people are realizing the importance of native plants, their importance can still be communicated in so many additional ways. Learn about the value of native plants and the myriad ways to communicate this to others: from their inter-connectedness to everything else, to presenting that value in varied and understandable ways. Leave this session equipped with practical tools to adapt your communications with the audiences you seek to reach.

## ● **All Hands on Deck: Collaboration for Midwestern Monarch Conservation**

**Kiley Friedrich**

Agriculture Program Coordinator,  
Monarch Joint Venture

Hear about the forged cooperative efforts in the area of Monarch habitat, restoration, and conservation work; successes, failures, and everything in between in this empowering session! The Monarch Joint Venture is a non-profit partnership organization working with landowners and farmers, federal and state agencies, non-governmental organizations, businesses and academic programs to protect the monarch migration across the United States. With an “All Hands On Deck” approach, we will share what we have learned to continue the valuable work of pollinator conservation.

## ● **Roundtable: Meeting the Increased Demand for Native Plants**

**Tracy Twombly**

Owner, Sow Wild Natives

**Claudio Vazquez**

Co-founder, Izel Native Plants

**Marc Elliott**

President & Co-founder at GoMaterials

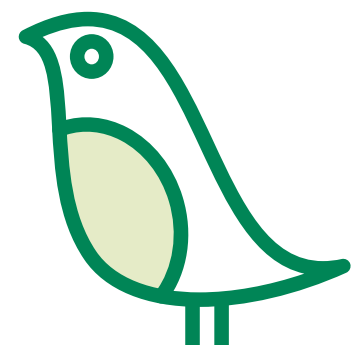
**Natasha Thomas-North**

Growing Center Manager, Taylor Creek  
Restoration Nurseries

Find out what the supply chain looks like when native plants are in demand and used on large-scale projects. Get your questions answered regarding the role that inventory planning and data play in meeting demand; challenges experienced by both suppliers and landscapers; logistical challenges; and success stories & solutions.

## ● **Speaker Office Hours**

Drop in to meet and chat with today’s presenters in small groups. Come and go as you please. To visit more than one session, simply return to the agenda and select another office. Please note: a Zoom account is required to participate in Office Hours.





# THURSDAY, SEPTEMBER 23



**WAMBUI IPPOLITO,**  
Horticulturist and  
Landscape Designer  
Keynote Speaker

Horticulturist and Landscape designer Wambui Ippolito is the 2021 Best in Show award winner at the Philadelphia Flower Show, the largest show of its kind in North America. She is the first Black woman ever to win and first solo female Major Exhibitor to do so.

She was born in Kenya. She was influenced by her mother's garden in Nairobi, her grandmother's farm in the countryside and the natural landscape.

Wambui is a graduate of the New York Botanical Garden School of Horticulture. She has worked in Martha Stewart's and David Letterman's gardens and owns and runs her own Landscape Design company. In 2021, Veranda Magazine named her one of "11 Revolutionary Female Landscape Designers and Architects You Should Know."

She lives in New York City, where she concentrates on urban gardens, public spaces and large estates.

## AGENDA

**12:00pm—5:00pm** ● Exhibitor Chats Open

**1:00—2:00pm** ● Welcome and Keynote Address | Wambui Ippolito

**2:15—3:15pm**

- Gardening with Grasses and Sedges | Dustin Demmer
- Transformation of a Superfund Site to a Demonstration Garden | Sami Aaron, Jennifer Kingston, Patti Ragsdale
- Native Pollinator Habitat Programs: A Case Study from Iowa | Justin Meissen

**3:30-4:30pm**

- Growing, Gathering and Cooking with Native Edibles | Dr. Nadia Navarrete-Tindall
- Getting Back to Basics and Planting Rainbows | Sandra Nam Cioffi
- Roundtable: Ask a Land Manager | \*Requires Zoom
- Understanding Soil Health to Regenerate Productivity | Dr. Yamily Zavala

**4:45—5:15pm** ● Speaker Office Hours | Meet and chat with today's presenters \*Requires Zoom



# SESSIONS

## ● Gardening with Grasses and Sedges

**Dustin Demmer**

Owner, Blazing Star Gardens

Join the grass revolution! This picture and video-packed presentation will demonstrate how grasses and sedges add cohesion, creativity, structure and beauty to native gardens throughout the year. No longer seen as ornamental novelties, grasses are the missing piece of true low-maintenance gardens and are also an important source of food and habitat for pollinators. Don't miss this opportunity to learn how to combine the serenity of grasses and sedges with the visual punch of flowers in any garden setting.

## ● Transformation of a Superfund Site to a Suburban Demonstration Garden

**Sami Aaron**

Founder, The Resilient Activist

**Jennifer Kingston**

Sr. Project Manager, Haley & Aldrich

**Patti Ragsdale**

Owner, Happy Apple's Farm Native Plant Nursery

Be encouraged by the unique story of the gardens of the Pollinator Prairie in this inspirational session. The Pollinator Prairie is situated in a scenic older neighborhood in Olathe, Kansas. The gardens are a former toxic waste Superfund site transformed by some ambitious and innovative thinkers to an ecological habitat and demonstration area for native gardens. Learn about the history of the site, tips and tricks on corralling native plants in a garden setting, ongoing volunteer maintenance programs, as well as educational outreach to the community about the ecological benefits of creating pollinator habitat at home.

## ● Native Pollinator Habitat Programs: A Case Study from Iowa

**Justin Meissen**

Research & Restoration,  
Tallgrass Prairie Center

Follow the journey of this research-rich program discussing the USDA's Pollinator Habitat Initiative. Large conservation programs operating in agricultural landscapes have been identified to address large, complex conservation issues such as native habitat restoration and pollinator and monarch recovery. In 2014, the USDA launched the popular Pollinator Habitat Initiative to improve pollinator habitat by seeding native wildflower and grass mixtures. In this session, follow the implementation of the Pollinator Habitat Initiative, its outcomes and lessons learned.

## ● Growing, Gathering, and Cooking with Native Edibles

**Dr. Nadia Navarrete-Tindall**

Native Plants Specialist, Educator,  
Consultant

Learn which native edible plants are easily grown in gardens and as specialty crops in the Midwest. Some edible native fruits, including acorns and flowers, will be discussed to demonstrate harvest and uses in recipes. In addition, you will learn about the FINCA EcoFarm, a demonstration farm located at Lincoln University campus, where several of these species have been grown and maintained since 2010. You also won't want to miss an important discussion on foraging ethics and plant identification.

## ● Getting Back to Basics and Planting Rainbows

**Sandra Nam Cioffi**

Founding Principal of Ink Landscape Architects, PLLC (INK)

Discover how to apply low-pressure techniques for designing and planting native gardens with this inspiring and informative session. Learn how simple sketching and drawing tools are used to create ecosystems, from simple to complex. Most of all, follow along on a journey about how to learn the basic principles of design, so we can start planting rainbows.

## ● Roundtable: Ask a Land Manager

**Matthew Garrett**

Field Biologist, Johnson County Park and Recreation District

**Shannon Tyree**

President/Restoration Ecologist,  
Habitat Architects

**Courtney Masterson**

Owner, Native Lands LLC

**Elizabeth Hamilton-Steele**

Marketing VP,  
Hamilton Native Outpost

Ask this expert panel your questions about managing large and small landscapes, anything from prescribed burns, dealing with invasives, to best seed mix combinations. This session is based on you and what you want and need to know to manage your space. You will likely not stump this group of subject matter experts. But you can try!

## ● Understanding Soil Health to Regenerate Soil Productivity

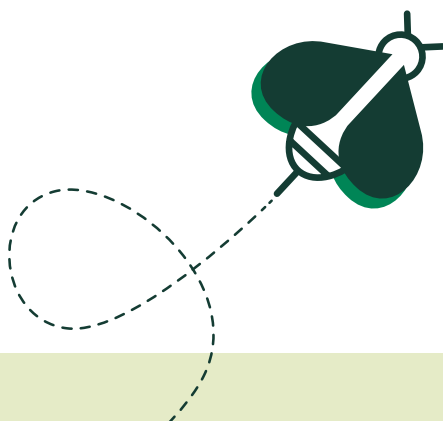
**Dr. Yamily Zavala**

Soil Health and Crop Management  
Specialist, CARA

Learn how to evaluate the health of your soil and how to address common problems. This rich and deep session will introduce us to soil health functionality: focusing on soil's physical, chemical and biological indicators; and how we can measure them. Don't miss this foundational session that will help us understand, rebuild and restore our soil's health.

## ● Speaker Office Hours

Drop in to meet and chat with today's presenters in small groups. Come and go as you please. To visit more than one session, simply return to the agenda and select another office. Please note: a Zoom account is required to participate in Office Hours.





# FRIDAY, SEPTEMBER 24



**DR. PETER RAVEN,**  
President Emeritus,  
Missouri Botanical Garden  
Keynote Speaker

Peter H. Raven is one of the world's leading botanists and advocates of conservation and biodiversity. For four decades, he headed the Missouri Botanical Garden, an institution he nurtured into a world-class center for botanical research, education and horticultural display. He retired as president in 2010 and assumed the role of president emeritus.

Described by *Time* magazine as a "Hero for the Planet," Raven champions research around the world to preserve endangered plants and is a leading advocate for conservation and a sustainable environment. In recognition of his work in science and conservation, Raven is the recipient of numerous prizes and awards, including the prestigious International Prize for Biology from the government of Japan and the U.S. National Medal of Science, the country's highest award for scientific accomplishment.

Raven was a member of President Bill Clinton's Committee of Advisors on Science and Technology. He also served for 12 years as home secretary of the National Academy of Sciences and is a member of the academies of science in Argentina, Brazil, China, Denmark, India, Italy, Mexico, Russia, Sweden, the U.K. and several other countries. The author of numerous books and reports, both popular and scientific, Raven co-wrote *Biology of Plants*, an internationally best-selling textbook, now in its eighth edition. He also co-authored *Environment*, a leading textbook on the environment.

## AGENDA

**7:00am–12:00pm** ● Exhibitor Chats Open

**8:00–9:00am**

- Getting Green Done: A Triple Top Line Approach to Green Infrastructure PART 1 | Trevor Smith
- Designing Memorable Interpretation: Wayside Exhibits that Work PART 1 | Jay Miller
- Establishing and Maintaining Prairie Plantings PART 1 | Jerod Huebner

**9:15–10:15am**

- Getting Green Done: A Triple Top Line Approach to Green Infrastructure PART 2 | Trevor Smith
- Designing Memorable Interpretation: Wayside Exhibits that Work PART 2 | Jay Miller
- Establishing and Maintaining Prairie Plantings PART 2 | Jerod Huebner

**10:30–11:00am** ● Speaker Office Hours | Meet and chat with today's presenters \*Requires Zoom

**11:00–11:45am** ● Closing Keynote Address | Dr. Peter Raven

**11:45pm–12:15pm** ● Keynote Office Hours | Meet and chat with Dr. Peter Raven \*Requires Zoom

# SESSIONS

## ● **Getting Green Done: A Triple Top Line Approach to Green Infrastructure**

**Trevor Smith**

Lead Designer, Land Escapes Design, Inc.

Hear how collaboration, community outreach, and training get the Green Infrastructure (GI) we need while simultaneously creating a sustainable workforce in this powerful two-part session. Learn to understand the roadblocks, and what to do about them. Find practical ways to guide and inspire you to create and implement your own projects! Let's stop operating in our own bubbles and collaborate to Get Green Done.

## ● **Designing Memorable Interpretation: Wayside Exhibits That Work**

**Jay Miller**

Interpretive Communications,  
Owner/Certified Interpretive Planner

Understand what attracts people to an exhibit and how to create a memorable experience in this two-part session. Learn about how people read, the cost-benefit ratio we all perform, and explore design elements that increase readership. Wayside exhibits are one of the most powerful interpretation tools in our toolbox. Signs and displays are on the job 24/7. When well-placed and simply designed, they make an impact. They tell the hidden stories, lead to action, and move the visitor from enjoying, to enjoying understandingly—and that's just what we want.

## ● **Establishing and Maintaining Prairie Plantings**

**Jerod Huebner**

Director of Prairie Management, Missouri Prairie Foundation


Navigate the roadmap for establishing and maintaining prairie plantings in this resource-rich session. Land managers large and small will gain valuable knowledge in this two-part guide that provides critical resources for prairie reconstruction, including site selection and planning as well as site preparation. In addition, proper use of herbicides, seed selection/sourcing and planting techniques will be discussed. Finally, we'll walk through the critical steps of long-term management. Don't miss this opportunity to see it all come together!

## ● **Speaker Office Hours**

Drop in to meet and chat with today's presenters in small groups. Come and go as you please. To visit more than one session, simply return to the agenda and select another office.

## Thank you for attending Plan It Native 2021!

**PLANITNATIVE.ORG**



Plan It Native is hosted  
by Deep Roots and its  
partners. Thank you  
for joining us!

**deeprootskc.org**

For the Every Green Team, protecting and restoring our environment has always been our passion. Today, Green Team volunteers continue to partner with educators, agencies, and conservation groups. To plant native vegetation. To construct new wetlands. To build nesting boxes. To recover wildlife species. It's working. Together, we've created or restored thousands of wetland acres.

The Green Team is proud to help create a greener, safer, richer environment for future generations.



every  
**GREEN TEAM**  
everygreen.com | 785.575.1586





A Tree Grows in Brooklyn has been creating **beautiful gardens and home landscapes** since 1979. Now under new ownership, we are excited to move into a new era of **sustainable prairie-scapes** while maintaining the quality and care that have been carefully crafted over 40 years.

**VIBRANT.  
BEAUTIFUL.  
SUSTAINABLE.**



**RESTORING NATURE,  
ONE GARDEN AT A TIME**

As a forerunner of the return to prairie initiative, **we envision our community thriving** with native plant species. We see a more vibrant ecology and a return of native pollinators and wildlife.



Bringing prairie and native plants into your landscape is a key way to add health and vitality to our community and beyond. We look to the future, the next 40 years, and the health of our planet for the sake of our children. **We hope you will choose to bring native plants back to this land, where they belong, and we hope you will choose us to be part of your journey.**

Call, text or email today to schedule a free consultation:

**Nan Brown** cell: 913-701-4565 • [nanette@atgib.com](mailto:nanette@atgib.com)

Serving northeastern Johnson county and southern Kansas City.



# Plan It Native 2021 Exhibitors

## Heartland CONSERVATION ALLIANCE

### Heartland Conservation Alliance

Heartland Conservation Alliance proactively conserves, protects, and restores natural lands and open space within the Kansas City region, benefitting the community and future generations by improving water quality, creating recreational opportunities, protecting life and property, and preserving our natural and cultural heritage.



### Grow Native!

Grow Native! is the 20-year-old native plant marketing and education program of the Missouri Prairie Foundation, a 54-year-old conservation organization and land trust. Grow Native! helps protect and restore biodiversity by promoting the use of native plants in urban, suburban, and rural developed landscapes and the built environment.



### Missouri River Bird Observatory

The Missouri River Bird Observatory is a 501(c)3 non-profit organization dedicated to the conservation of Missouri's birds and their habitats via scientific research and monitoring, K-12 education, community outreach, and conservation policy advocacy. MRBO works throughout the state of Missouri and in eastern Kansas to promote the conservation and restoration of native landscapes at every scale.



### Izel Plants

Izel Native Plants is a unique e-commerce store that solves the challenge of sourcing native plants. By combining the inventories of wholesale growers and nurseries from the East Coast to the Midwest, Izel offers an unparalleled selection of plants sold in flats of plugs, in quarts, and in 3.5" pots. The website is user-friendly, informative, and allows for an easy checkout process. Trade and non-trade customers are welcome!



### Missouri Organic Recycling

For 25 years, we've been a valued neighbor in the Kansas City community. Maybe you only know us as a convenient local drop-off point for yard waste recycling but we offer so much more! Compost, mulch, even green roofing products!



### Mid-America Regional Council Water Quality Public Education Committee

The Regional Water Quality Public Education Program is a comprehensive approach to raising public awareness about watershed issues and water quality in the nine-county Kansas City metropolitan area, which includes 119 separate city governments.



### Mad Hatter Compost Tea

Mad Hatter Compost Tea is product of Hilary Noonan and Syntax Land Design. A brew of liquid biological amendments will make your soil and flora resilient whether you have 100 square feet of vegetables in the city, 15,000 square feet of suburban yard, or acres of orchard on your rural homestead.



### Sow Wild Natives

We provide high-quality, regional native plants to add function and beauty to yards and greenspaces throughout the Kansas City region to support our vision of restoring balance to our ecosystem.



### Hamilton Native Outpost

Hamilton Native Outpost raises, harvests, cleans, and sells native grass and wildflower seed, which is used in wildflower-meadow style landscaping, restoration of rare and declining habitats, wildlife and pollinator habitat, and forage for livestock.



### Heartland Seed Of Missouri

Heartland Seed of Missouri, LLC is a native seed provider dedicated to helping rebuild prairie one planting at a time. We have mixes for prairie, pollinators, food plots, brood-rearing, nesting and bedding.





# KC PARKS

## WHERE NATURE IS A PRIORITY

WE ARE COMMITTED TO::

- ◆ REPLACING NON-NATIVE ANNUALS WITH NATIVE PERENNIAL PLANTS
- ◆ PLANTING PRAIRIE - 15 NEW ACRES PLANNED IN THE NEXT YEAR
- ◆ REDUCING MOWING AND EMISSIONS



# Missouri Wildflowers Nursery






- ✓ Over 400 species.
- ✓ Flowers, grasses, trees, shrubs, vines, sedges, and pond plants.
- ✓ Plants for full sun, full shade, and everything in between.
- ✓ Seed, seed mixes, and custom blends.
- ✓ Potted plants starting at \$2.75.
- ✓ Expert advice.
- ✓ Contact us for our outstanding free catalog!

[www.mowildflowers.net](http://www.mowildflowers.net)  
 573-496-3492, fax: 573-496-3003, [mowildflrs@socket.net](mailto:mowildflrs@socket.net)  
 9814 Pleasant Hill Rd, Jefferson City, MO 65109

# Discover nature with us.

## Conservation Nature Center

*Anita B German*  
**Discovery Center**  
 4750 Troost Avenue  
 Kansas City  
 816-759-7300  
[mdc.mo.gov/discoverycenter](http://mdc.mo.gov/discoverycenter)

MISSOURI DEPARTMENT OF CONSERVATION

# GaleHart

## COMMUNITIES

Place makers creating innovative, intentional planned communities.

Proud Sponsor:



[GaleHartCommunities.com](http://GaleHartCommunities.com)





**THANK YOU GOLD SPONSOR**

**MILLER HAMMOND  
CHARITABLE FUND**

## COLONIAL GARDENS

It's time to PlantRight with access to one of the largest selections of trees in the country



OUR PARENT COMPANY, DCA OUTDOORS,  
GROWS OVER 1 MILLION TREES PER YEAR



We also carry a wide variety of Kansas/Missouri native plants

**27610 E WYATT RD. BLUE SPRINGS, MO 64014 [COLONIALGARDENSKC.COM](http://COLONIALGARDENSKC.COM)**

# Thank You Plan It Native 2021 Sponsors!

Platinum Sponsor



Gold Sponsors



Silver Sponsors



Bronze Sponsors

